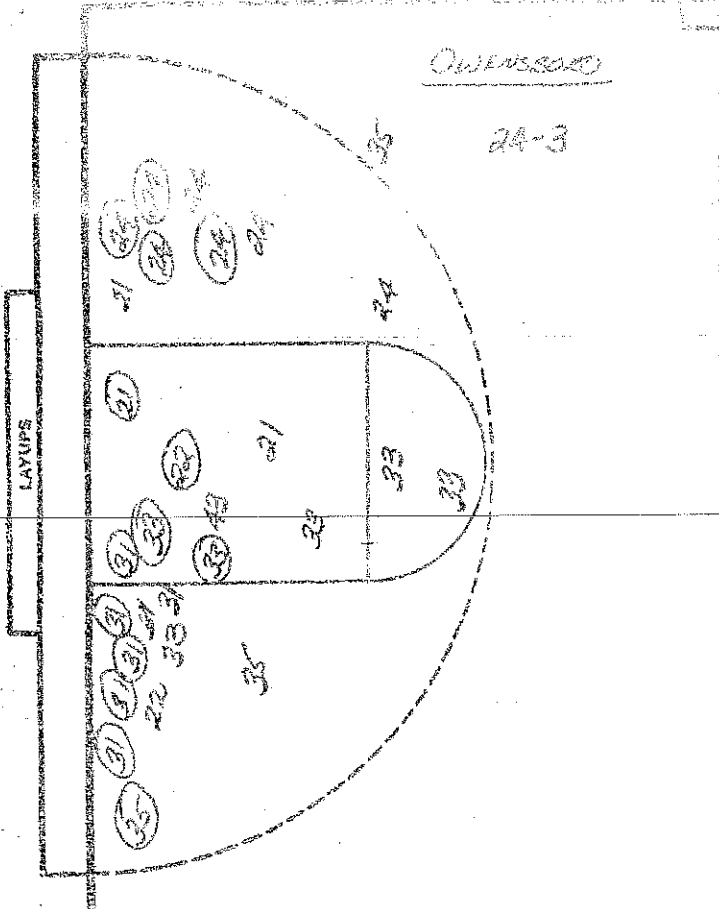
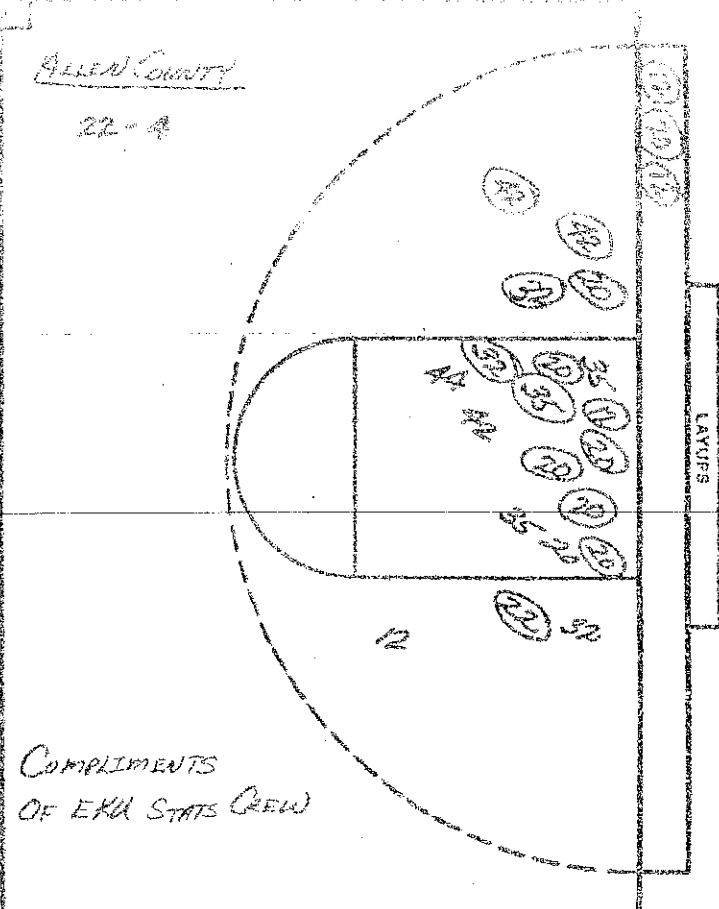


CASE CHART

Owensboro 4-12-13 Allen Co 4-21-13 5-1-13



23-32
22-18
24-20
33-12
21-12
33-12
21-42
21-12
33-22
19-12
11
12
13
16
13
11
17
18



COMPLIMENTS OF EXU STATE CREW

NO.	OWNERSBORO	FG-FGA	FT-FTA	RE	P	TP	A
35	JUNE HARRIS	2-10	1-0	2	1	4	3
24	ANITA GRIFFITH	4-9	0-0	2	2	8	2
21	BEA BROWN	1-4	1-3	5	4	3	0
22	BARBARA HUNTAN	4-8	0-0	5	4	8	5
31	DIANNE DEPP	8-17	0-1	11	2	16	1
33	WENDY MORTON	2-7	2-4	3	4	6	5
14	KIM Mc DANIEL	1-0	0-0	0	1	0	0
13	DWYETA QUELEY	1-2	0-0	0	1	2	0
		-	-				
		-	-				
		-	-				
		-	-				
		-	-				
		-	-				
		-	-				
		-	-				
TOTALS		22-57	3-8	28	19	47	16

NO.	ALLEN COUNTY	FG-FGA	FT-FTA	RE	P	TP	A
12	JOANNA OLLAHANT	5-8	4-8	5	1	14	6
35	JENNIFER CUNNINGHAM	1-4	0-1	3	2	2	1
42	DOANNA SMITH	4-9	2-2	8	2	10	6
44	ANGEL RIPPY	3-5	3-4	3	1	9	1
20	PRYNATAJA GEMMIS	9-12	1-2	7	3	19	0
32	VERA HALL	3-4	0-0	1	3	6	0
22	TAMMY LYCES	1-1	0-0	1	1	2	1
		-	-				
		-	-				
		-	-				
		-	-				
		-	-				
		-	-				
		-	-				
		-	-				
		-	-				
TOTALS		26-43	10-17	29	13	62	15

PERCENTS 38.6 37.5 4 TEAM REBOUNDS (NOT IN TOTAL)

PERCENTS 60.5 58.9 4 TEAM REBOUNDS (NOT IN TOTAL)

OWNERSBORO
SCORE BY HALVES 4-12-13-13=47
OFFICIALS: BRODER + MAREY
ATTENDANCE: 4,600 est

Allen Co
12-13-21-15=67